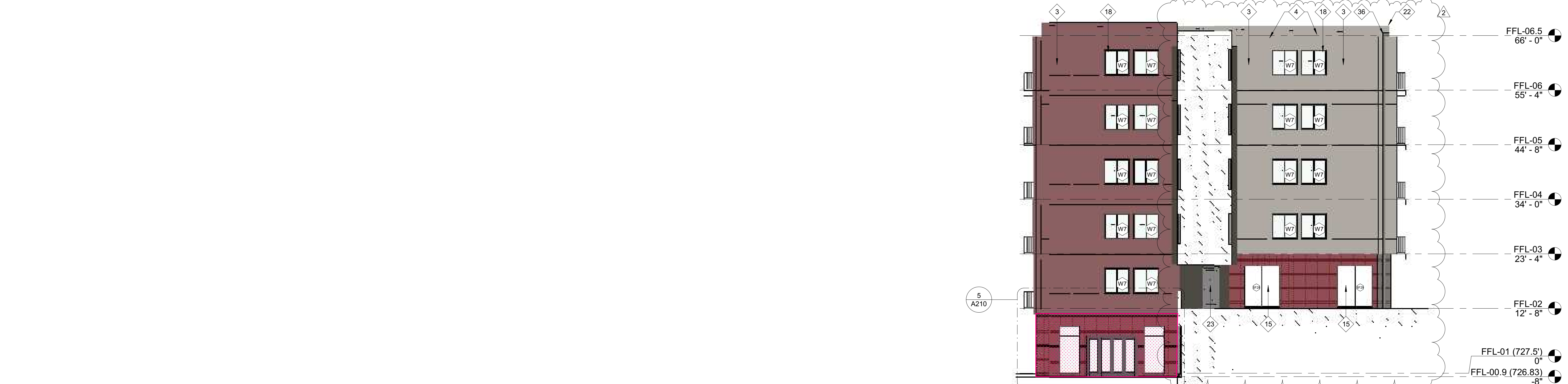


EXTERIOR ELEVATION NOTES

- SMOOTH-FACED INDIANA LIMESTONE VENEER, BUFF. CONTINUE VERTICALLY TO 3RD FLOOR LEVEL.
- FIBER CEMENT PANEL SIMILAR TO JAMES HARDIE ASPYRE REVEAL PANEL WITH RECESS TRIM ABOVE 3RD FLOOR LEVEL. PAINT TO MATCH LIMESTONE.
- FIBER CEMENT PANEL, W/ALUM. REVEALS (EASY TRIM OR EQ.). PAINTED. PROVIDE 8" BOTAL TRIM BOARD OR EQUAL AT ALL GRADE CONDITIONS.
- FIBER CEMENT TRIM - 12" PAINTED.
- BURNISHED MASONRY UNIT (16L X 8H X 12D), GRAND BLANC CEMENT PRODUCTS OR EQUAL.
- FIBER CEMENT TRIM - 6" PAINTED.
- FIBER CEMENT LAP SIDING, 8" EXPOSURE. PAINTED. TYPICAL ALL BALCONY RECESSES.
- WOOD LOOK OPEN-JOINT COMPOSITE CLADDING, 4" EXPOSURE. HUNG VERTICALLY. REFER TO MATERIAL LEGEND AND SPECIFICATIONS FOR ADDITIONAL INFORMATION.
- FACE BRICK 'A' - WHITE, MODULAR. REFER TO MATERIAL LEGEND AND SPECIFICATIONS FOR ADDITIONAL INFORMATION.
- FACE BRICK 'B' - LIGHT GRAY, MODULAR. REFER TO MATERIAL LEGEND AND SPECIFICATIONS FOR ADDITIONAL INFORMATION.
- FACE BRICK 'C' - DARK GRAY, UTILITY. REFER TO MATERIAL LEGEND AND SPECIFICATIONS FOR ADDITIONAL INFORMATION.
- FACE BRICK 'D' - DARK RED, MODULAR. REFER TO MATERIAL LEGEND AND SPECIFICATIONS FOR ADDITIONAL INFORMATION.
- TOP-MOUNT ALUMINUM BALCONY RAILING TO 42" A.F.F., DARK BRONZE, TYP.
- THERMAL STOREFRONT GLAZING (KAWNEER OR EQ.), DARK BRONZE ANODIZED FINISH, TYP.
- NARROW STYLE STOREFRONT DOOR, DARK BRONZE ANODIZED FINISH, TYP.
- PREMIUM VINYL FIXED WINDOW, DARK BRONZE FINISH.
- PREMIUM VINYL SLIDER WINDOW, DARK BRONZE FINISH.
- PREMIUM VINYL AWNING WINDOW, DARK BRONZE FINISH.
- PREMIUM VINYL PATIO DOOR, 8'-0" H, DARK BRONZE FINISH, TYP.
- PREFINISHED METAL CORING.
- HOLLOW METAL DOOR AND FRAME, 4" HEAD, PAINT TO MATCH ADJACENT BRICK.
- COMMERCIAL OVERHEAD SECTIONAL DOOR, DARK BRONZE FINISH.
- FIBER CEMENT LAP SIDING, PAINTED, 4" EXPOSURE WITH 6" EXPOSURE INSERTED EVERY 64"
- PREP AND PRIME CMU/CIP/PCP SUBSTRATE TO RECEIVE PAINTED MURAL ART.
- POWDER-COATED WOVEN-WIRE MESH ON PAINTED STEEL FRAME.
- METAL PANEL, RAINSCREEN SYSTEM (AMERICALAD AC-1200BV OR EQ.), DARK BRONZE FINISH.
- FACE BRICK 'C' - DARK GRAY, SOLDIER UTILITY, 8" MASONRY BASE, TYPICAL AT ALL GROUND LEVEL STOREFRONT. REFER TO MATERIAL LEGEND AND SPECIFICATIONS FOR ADDITIONAL INFORMATION.
- SCAFFOLD / BRANDING: PROVIDE ELECTRICAL AND STRUCTURAL INFRASTRUCTURE.
- PREFINISHED METAL BRICK MOULD SILL.
- FIBER CEMENT PANEL, BLUMPOUT - 2" OFFSET, PAINTED.
- FIBER CEMENT PANEL, BLUMPOUT - 4" OFFSET, PAINTED.
- OPERABLE GLASS WALL (NANAWALL OR EQ.), DARK BRONZE ANODIZED FINISH, TYP.
- GUTTER SYSTEM AND DOWNSPOUT, TYP.
- PREMIUM VINYL MULTI-SLIDE PATIO DOOR, 7'-0" H, DARK BRONZE FINISH, TYP.
- PREMIUM VINYL PATIO DOOR, 7'-0" H, DARK BRONZE FINISH, TYP.
- FIBER CEMENT TRIM - 4" PAINTED.
- FACE BRICK 'D' - DARK RED, SOLDIER UTILITY, 8" MASONRY BASE, TYPICAL AT ALL GROUND LEVEL STOREFRONT. REFER TO MATERIAL LEGEND AND SPECIFICATIONS FOR ADDITIONAL INFORMATION.
- 1/2" BRICK REVEAL COURSE.
- CEGAR WOOD GRK POST, PAINTED. PAINT COLOR TO MATCH COMPOSITE DECKING SELECTION.



2 NORTH ELEVATION
1" = 10'-0"



2 WEST ELEVATION
1" = 10'-0"

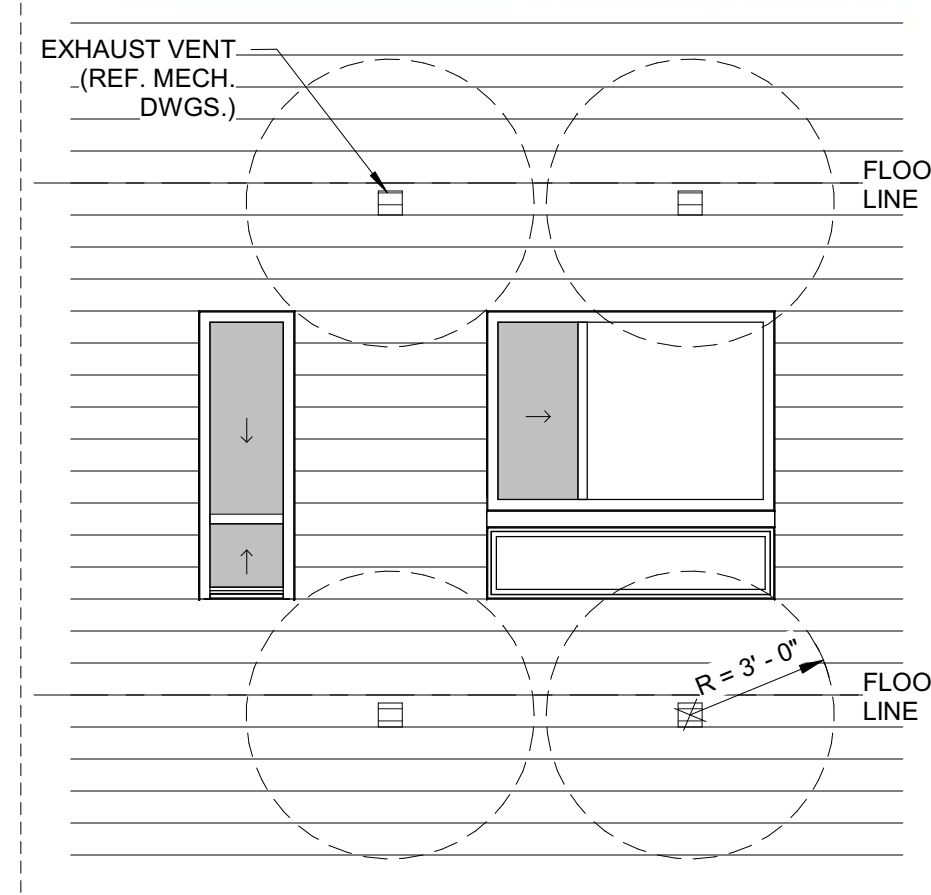
MATERIAL LEGEND

MASONRY MATERIALS

- CALLOUT:** FACE BRICK 'A'
- DESCRIPTION:** WHITE FBX BRICK (MODULAR) - 4,052 SF
- PRODUCT:** BASIS OF DESIGN: PALMETTO BRICK CO. COLOR: WHITESTONE MORTAR: BRIMXMENT C-380
- CALLOUT:** FACE BRICK 'B'
- DESCRIPTION:** LIGHT GRAY FBX BRICK (MODULAR) - 5,472 SF
- PRODUCT:** BASIS OF DESIGN: MERIDIAN BRICK COLOR: DARK GREY WIRECUT MORTAR: BRIMXMENT TENNESSEE BUFF
- CALLOUT:** FACE BRICK 'C'
- DESCRIPTION:** DARK GRAY FBX BRICK (UTILITY), VERTICAL RUNNING BOND - 801 SF
- PRODUCT:** BASIS OF DESIGN: HEBRON BRICK COMPANY COLOR: SLATE GRAY VELOUR MORTAR: BRIMXMENT X-30
- CALLOUT:** FACE BRICK 'D'
- DESCRIPTION:** RED BRICK (MODULAR) - 3,452 SF
- PRODUCT:** BASIS OF DESIGN: MERIDIAN BRICK COLOR: GARNET IRONSPOT MORTAR: BRIMXMENT C-31
- CALLOUT:** STONE PANELS
- DESCRIPTION:** LIMESTONE FACADE PANELS
- PRODUCT:** BASIS OF DESIGN: SMOOTH CUT LIMESTONE MASONRY BASE ABOVE COLOR: WAIKIKI SAND

SIDING MATERIALS

- CALLOUT:** FIBER CEMENT PANEL
- DESCRIPTION:** VERTICAL FC SIDING PANEL (SMOOTH) WITH RECESS TRIM
- PRODUCT:** BASIS OF DESIGN: JAMES HARDIE ASPYRE PANEL WITH RECESS TRIM
- CALLOUT:** FIBER CEMENT LAP SIDING
- DESCRIPTION:** LAP SIDING - VARIED EXPOSURE
- PRODUCT:** BASIS OF DESIGN: JAMES HARDIE LAP SIDING, SMOOTH
- CALLOUT:** WOOD LOOK CLADDING
- DESCRIPTION:** WOOD LOOK OPEN-JOINT COMPOSITE CLADDING
- PRODUCT:** BASIS OF DESIGN: TIMBERTECH AZEK OPEN-JOINT CLADDING WEATHERED TEAK COLOR:



*PROVIDE 3'-0" CLEARANCE FROM VENT TO OPERABLE OPENING.
*REFER TO MECHANICAL DRAWINGS FOR VENT DETAILS AND ROUTING.
*GO TO COORDINATE VENT ROUTINGS WITH OPERABLE OPENING LOCATIONS.

TYP. DRYER VENT CLEARANCE
1/4" = 1'-0"

BROAD RIPPLE MIXED-USE

6220 GUILFORD AVENUE
INDIANAPOLIS, IN 46240

DATE: 2023.05.22
PROJECT #: 2021-055



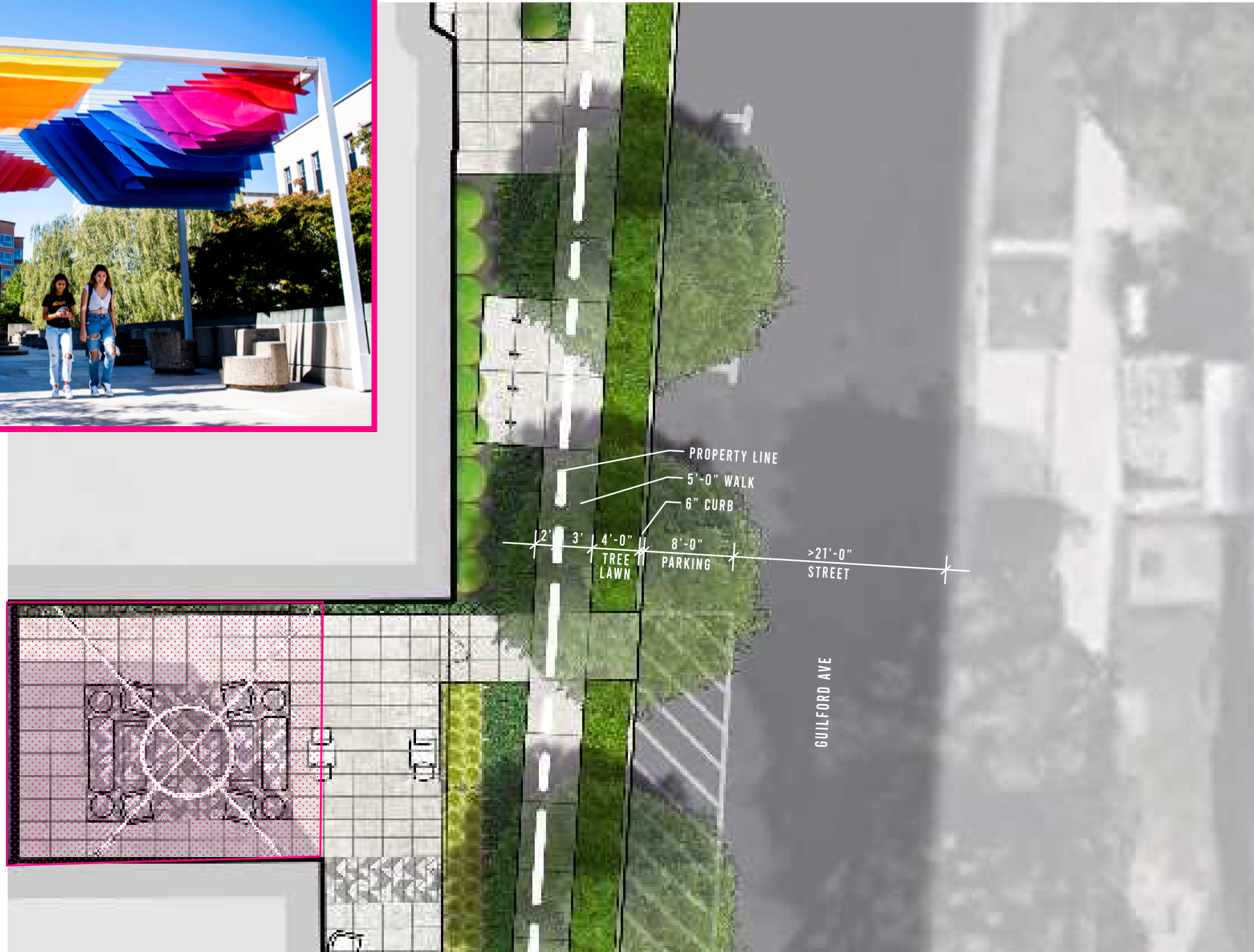
ISSUE FOR CONSTRUCTION SET

SHEET REVISIONS	DATE
1	DESCRIPTION
2	DESCRIPTION

EXTERIOR ELEVATIONS

SHEET NO

AREA 1B INSTALLATION OPTION



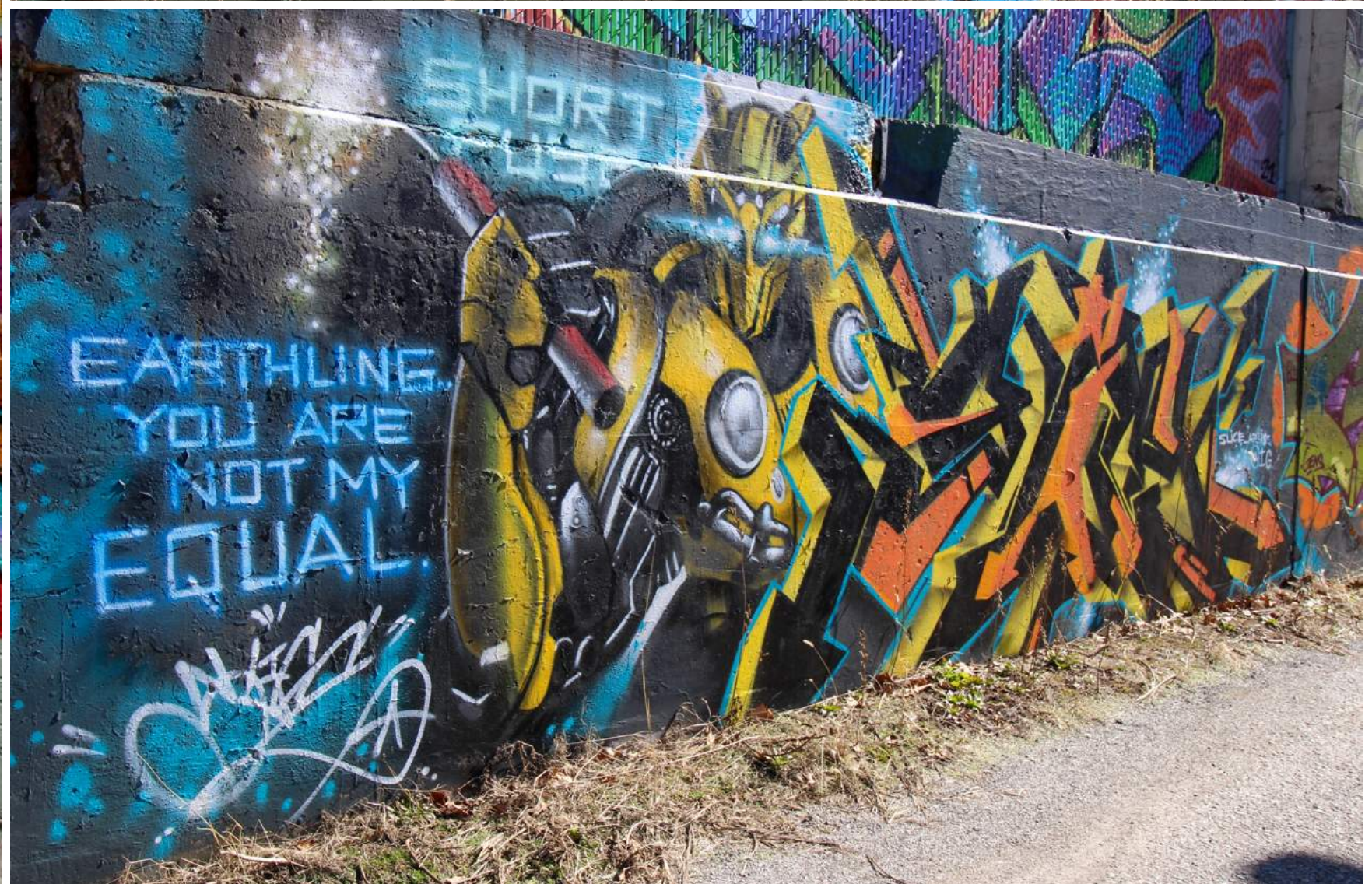
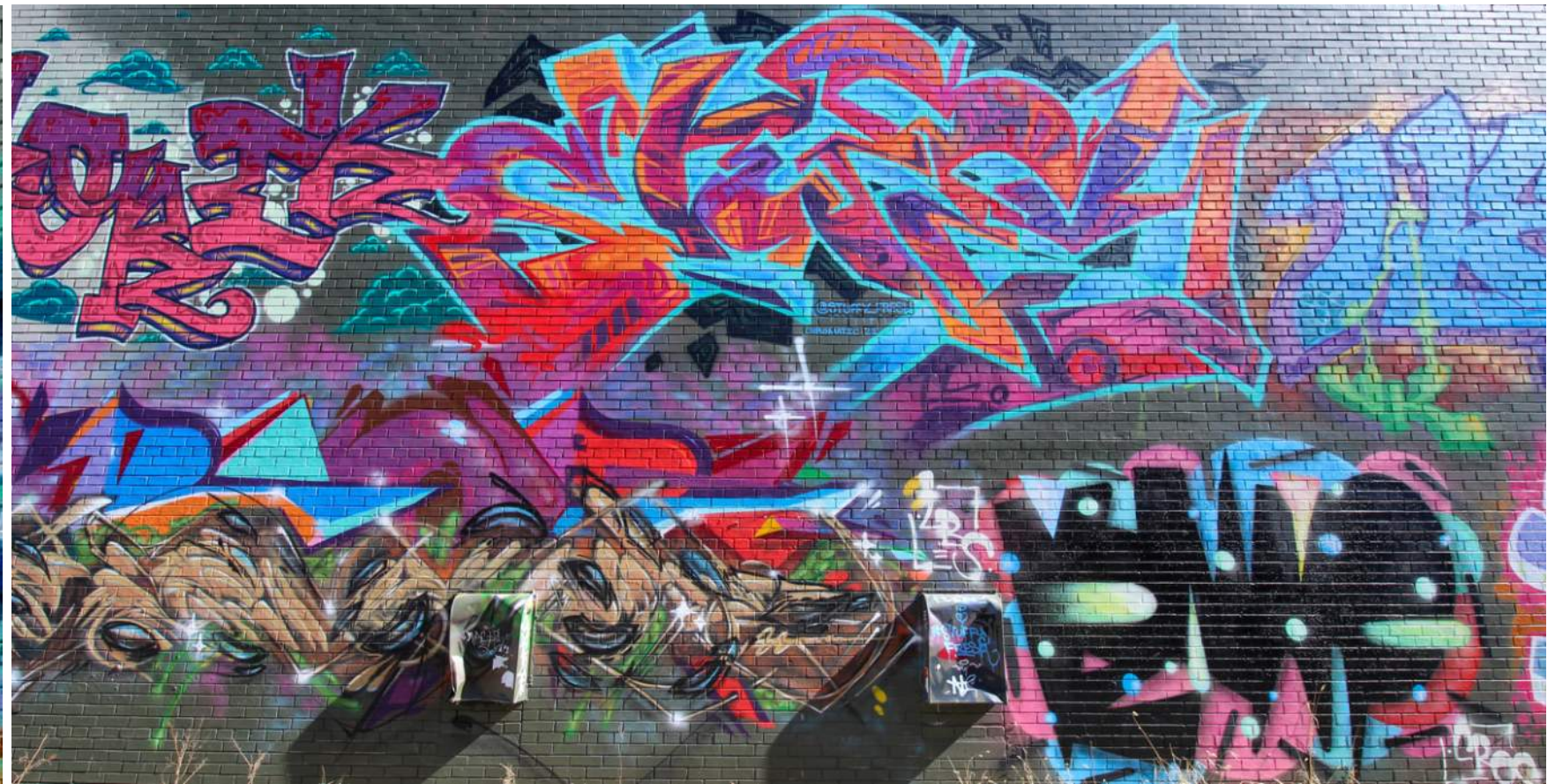
626.77 sf

↑ N SCALE 1"=10'-0"



VIEW FROM SIDEWALK

ALLEY ART ON PREVIOUS BUILDING





VERSA

BRAND STANDARDS

ICON / NAME PLATES

VERSA
BROAD RIPPLE



VERSA

PRIMARY LOGO

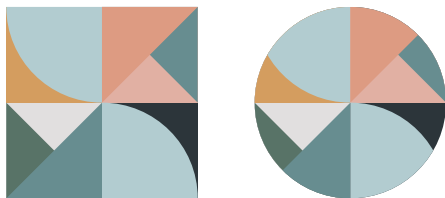


VERSA
BROAD RIPPLE



VERSA
BROAD RIPPLE

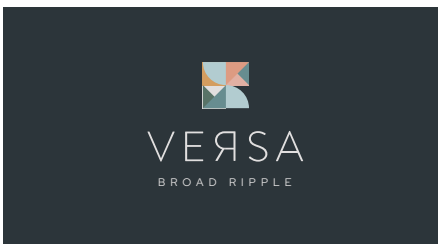
SOCIAL ICONS



COLOR PALETTE

<p>SAGE</p> <p>CMYK: 67 40 58 17 RGB: 87 115 103 HEX: 577367</p>	<p>RIPPLE</p> <p>CMYK: 63 33 39 4 RGB: 103 141 144 HEX: 678D90</p>	<p>BLOOM</p> <p>CMYK: 12 44 47 0 RGB: 221 155 130 HEX: DD9B82</p>	<p>DEEP WATER</p> <p>CMYK: 76 63 58 55 RGB: 44 53 57 HEX: 2C3539</p>
<p>OCHRE</p> <p>CMYK: 17 40 71 1 RGB: 211 157 95 HEX: D39D5F</p>	<p>CLEAR SKIES</p> <p>CMYK: 31 10 15 0 RGB: 177 204 208 HEX: B1CCD0</p>	<p>BLOSSOM</p> <p>CMYK: 11 34 31 0 RGB: 224 175 162 HEX: E0AFA2</p>	<p>PEWTER</p> <p>CMYK: 11 9 9 0 RGB: 224 223 223 HEX: E0DFDF</p>

REVERSE LOGO



PRIMARY FONTS

RED HAT DISPLAY
Light / Regular / Semi / Bold / Black

ABCDEFGHIJKLMNOPQRSTUVWXYZ
abcdefghijklmnopqrstuvwxyz
1234567890

ABCDEFGHIJKLMNOPQRSTUVWXYZ
abcdefghijklmnopqrstuvwxyz
1234567890

ABCDEFGHIJKLMNOPQRSTUVWXYZ
abcdefghijklmnopqrstuvwxyz
1234567890

ABCDEFGHIJKLMNOPQRSTUVWXYZ
abcdefghijklmnopqrstuvwxyz
1234567890

Bely Display
Regular

ABCDEFGHIJKLMNOPQRSTUVWXYZ
abcdefghijklmnopqrstuvwxyz
1234567890

Lindsey Signature
Regular

ABCDEFGHIJKLMNOPQRSTUVWXYZ
abcdefghijklmnopqrstuvwxyz
1234567890





omplate

BREAKFAST SALAD TEA

LUNCH COFFEE



Green Plate